



# ***Windows Communication Foundation***

***Craig Butler***

***Senior Consultant***

***Application Integration CoE Lead***

# Introduction

- **Who am I...**

- Craig Butler, Senior Consultant
- Application Integration CoE Leader
- Areas of Focus
  - Application Integration
  - SOA / ESB Architecture
  - Human Centric Workflow / Business Process Management
- Member of the Microsoft BizTalk Server Virtual Technology Specialist Team
- K2 Insider



# *Agenda*

- **What is WCF?**
- **Common Deployment Scenarios**
- **Clients and Services**
- **SOAP and WS-\***
- **Is WCF right for my project?**

# *Session Prerequisites*

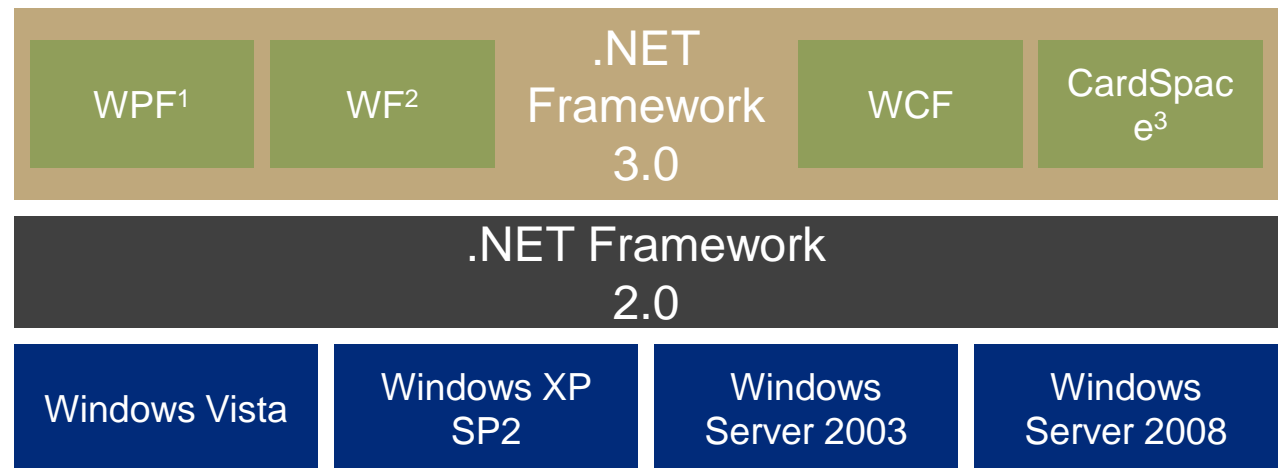
- **Experience building Microsoft .NET Framework Applications**
- **Basic Understanding of distributed application scenarios and Web Services**

# *Agenda*

- **What is WCF?**
- Common Deployment Scenarios
- Clients and Services
- SOAP and WS-\*
- Is WCF right for my project?

# What is WCF?

- **Windows Communication Foundation**
- **Part of the Microsoft .NET Framework 3.0**
  - **Part of the Windows Vista and Windows Server 2008 operating systems**
  - **Supported by Windows XP SP2 and Windows Server 2003**



1. Windows Presentation Foundation (WPF)
2. Windows Workflow Foundation (WF)
3. Windows CardSpace

# *Communication Platform Evolution*

**ASMX**

Interop with other  
platforms

**.NET  
Remoting**

Extensibility  
Location  
transparency

**Enterprise  
Services**

Attribute – Based  
Programming

**MSMQ**

Message – Oriented  
Programming

**WSE**

WS-\* Protocol  
Support

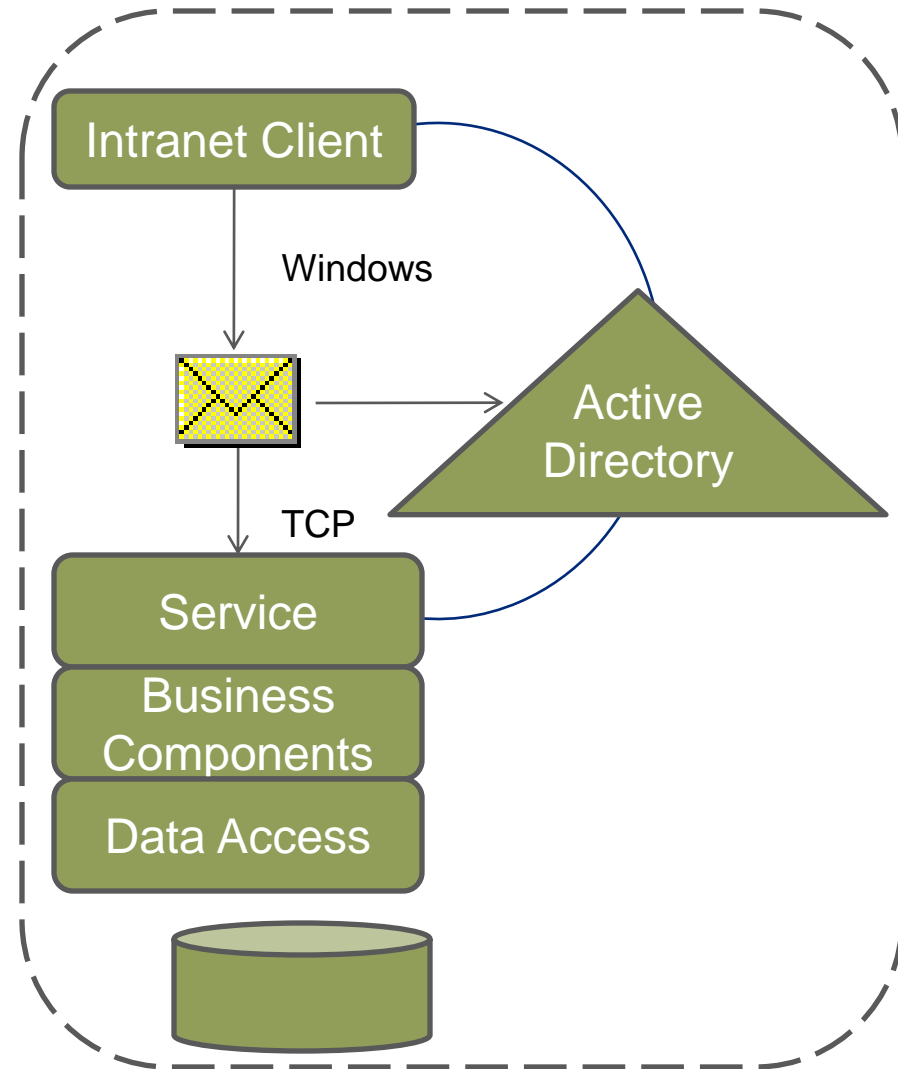
# *Agenda*

- What is WCF?
- **Common Deployment Scenarios**
- Clients and Services
- SOAP and WS-\*
- Is WCF right for my project?



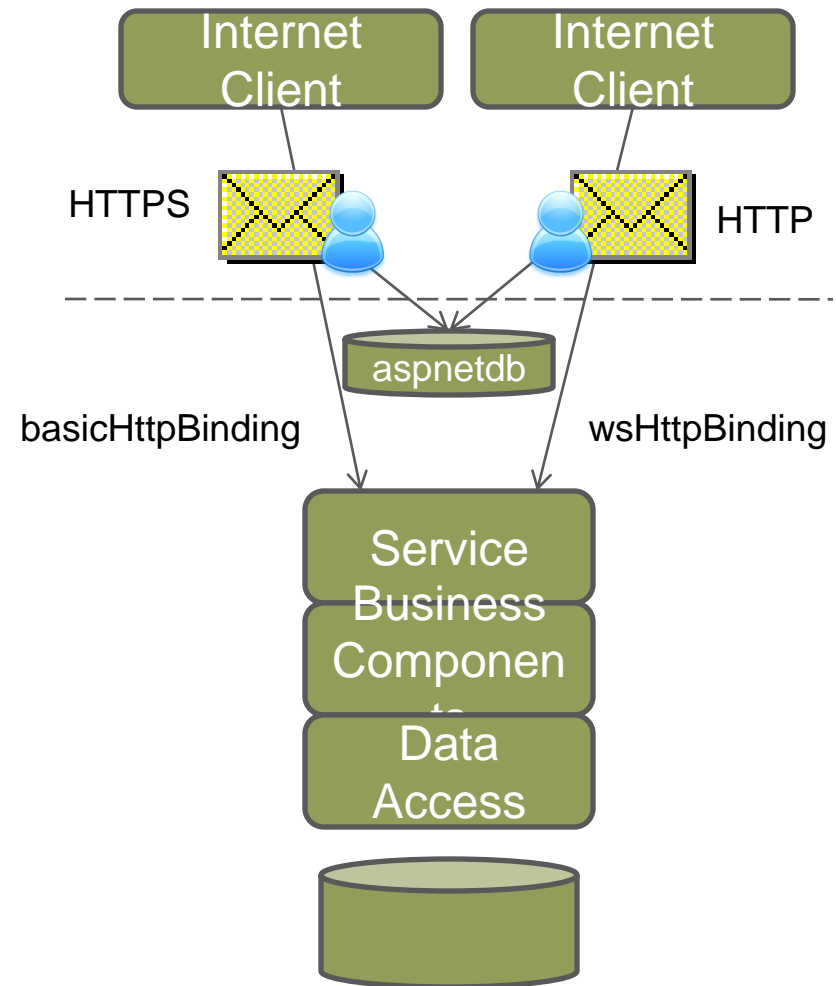
# Intranet Applications

- **WCF supports classic client-server deployments**
  - Mutual Windows authentication (NTLM or Kerberos)
  - TCP/binary messaging
  - Windows credentials for message protection
- **Services distributed across process or machine boundaries**



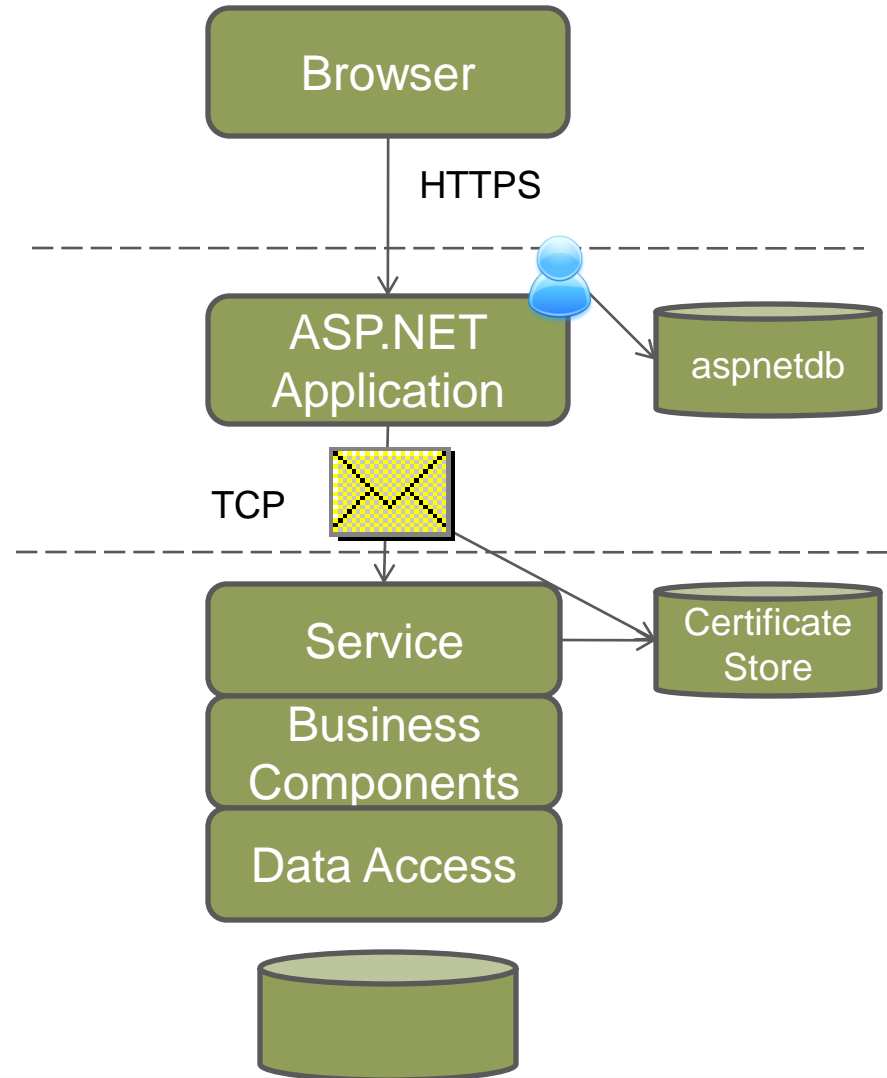
# Web Services

- **WCF supports interoperable Web services**
  - **Transfer security provided by the transport (SSL) or via message security**
  - **Username/password authentication (typical, but other options exist)**
- **WS-\* protocol support**



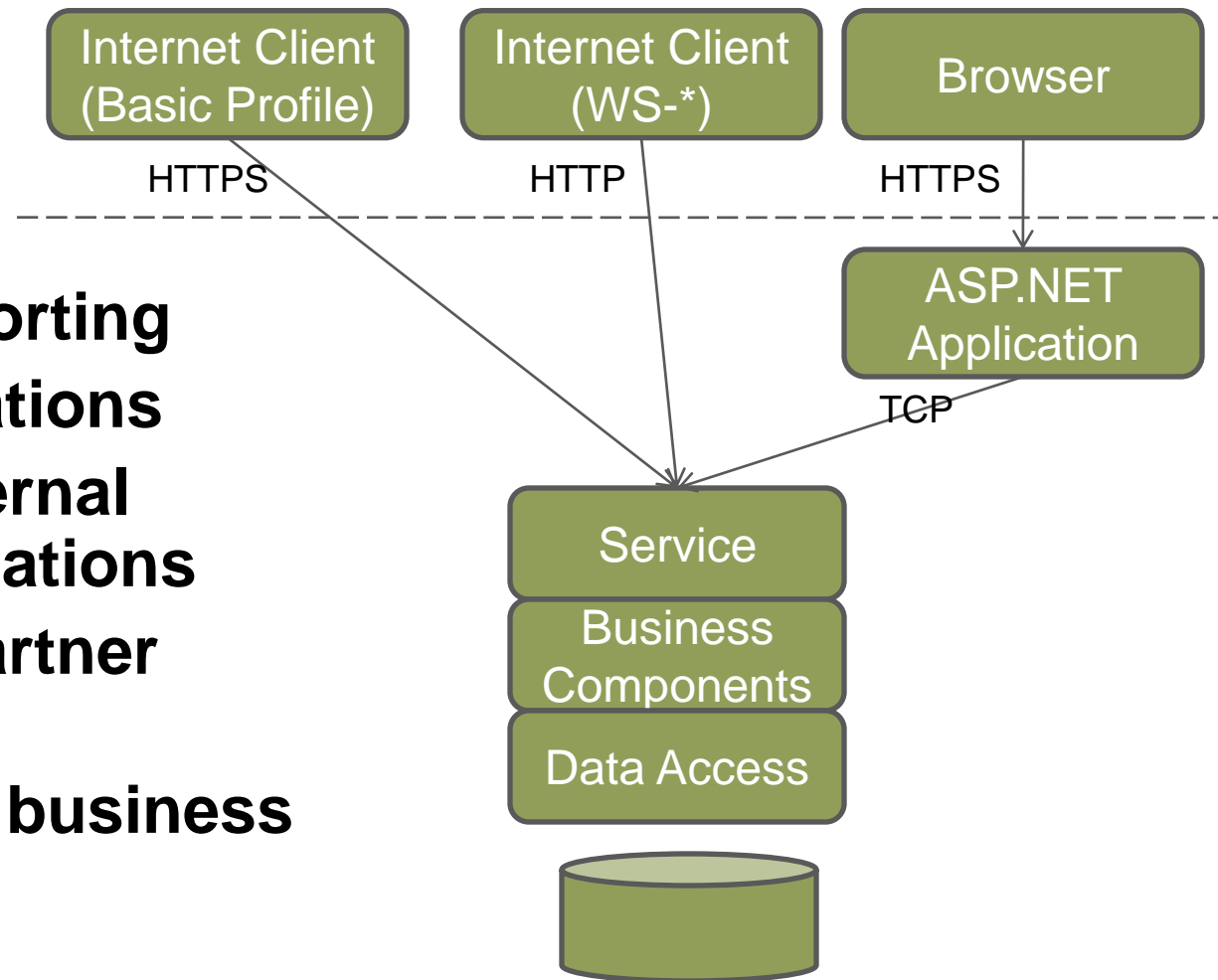
# Web Applications

- **WCF can expose business functionality to web applications**
  - **Mutual certificate authentication behind the firewall**
  - **TCP/binary for performance**
- **Provides a security boundary for ASP.NET applications**
- **Enables distribution of work across process or machine boundaries**



# SOA

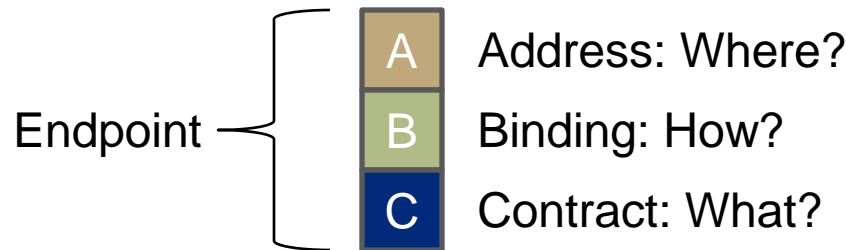
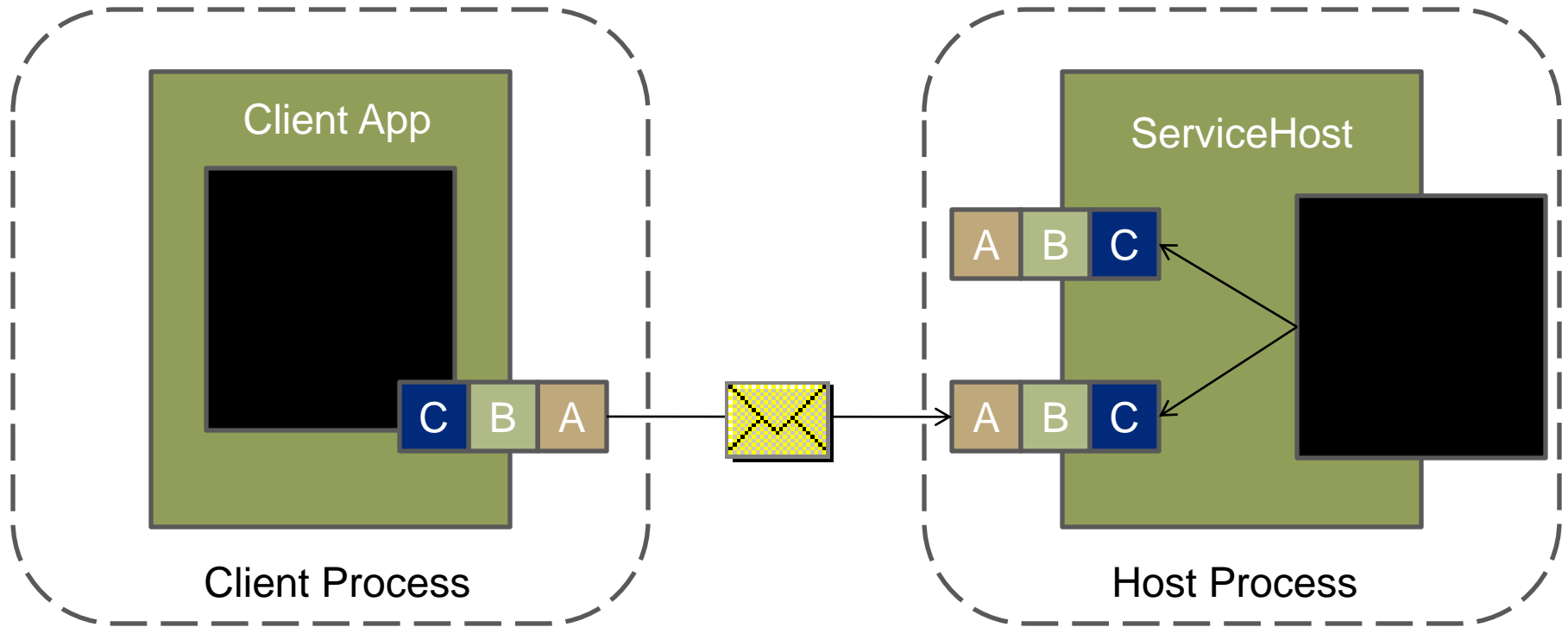
- **WCF services are a strategic part of SOA**
- **Services supporting**
  - **Web applications**
  - **Internal/external client applications**
  - **Business partner integration**
- **Distribution of business functionality**



# *Agenda*

- What is WCF?
- Common Deployment Scenarios
- **Clients and Services**
- SOAP and WS-\*
- Is WCF right for my project?

# Client and Service Endpoints



# ***DEMO***

**Hello World**  
**WCF Client/Service**

## *Basic Requirements for Clients and Services*

- **At the service:**
  - **Define and implement a service contract**
  - **Construct a ServiceHost instance for the service type, exposing endpoints**
  - **Open the communication channel**
- **At the client:**
  - **Requires a copy of the service contract and information about endpoints**
  - **Construct a communication channel for a particular endpoint and call operations**



# *Agenda*

- What is WCF?
- Common Deployment Scenarios
- Clients and Services
- **SOAP and WS-\***
- Is WCF right for my project?

# SOAP

- **Simple Object Access Protocol**
- **Sample SOAP Envelope:**

```
<?xml version="1.0"?>
<soap:Envelope xmlns:soap="http://www.w3.org/2001/12/soap-envelope"
soap:encodingStyle="http://www.w3.org/2001/12/soap-encoding">

<soap:Header>
  <m:Trans xmlns:m="http://www.w3schools.com/transaction/"
  soap:mustUnderstand="1">234</m:Trans>
</soap:Header>

  <soap:Body xmlns:m="http://www.example.org/stock">
    <m:GetStockPrice>
      <m:StockName>IBM</m:StockName>
    </m:GetStockPrice>
  </soap:Body>

</soap:Envelope>
```

# WS-\*

- **WS-Security**
- **WS-Addressing**
- **WS-Reliability**
- **WS-ReliableMessaging**
- **WS-Transaction**
- **And more!**

# *Agenda*

- What is WCF?
- Common Deployment Scenarios
- Clients and Services
- SOAP and WS-\*
- **Is WCF right for my project?**

# *Is WCF right for my project?*

- **How does WCF compare to earlier Microsoft communication technologies?**
  - WCF is more powerful and flexible than the earlier technologies. In most cases it performs better too.
- **How steep is the learning curve?**
  - Not steep if you are already familiar with the earlier communication technologies.
- **Is WCF a tried and true technology?**
  - Yes, the RTM version of WCF was released in 2006 and is fully supported by Microsoft.

# Performance

Technology	Comparison
ASMX	WCF is 25% to 50% faster
Remoting	WCF is about 25% faster
Enterprise Services	WCF is faster in some cases, and slower in others
WSE	WCF is about 4x faster

Source: Microsoft Whitepaper - [A Performance Comparison of Windows Communication Foundation \(WCF\) with Existing Distributed Communication Technologies](#)

# *Questions?*



- **Session Content**
- **[www.allsoa.wordpress.com](http://www.allsoa.wordpress.com)**